

NYE PLANNED UNIT DEVELOPMENT  
**RIVERMILL**

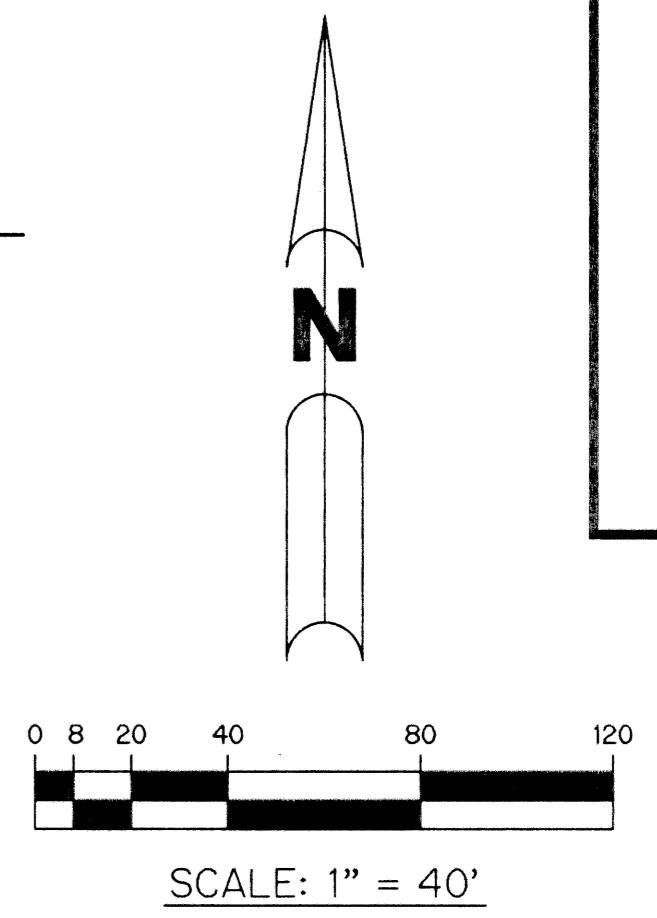
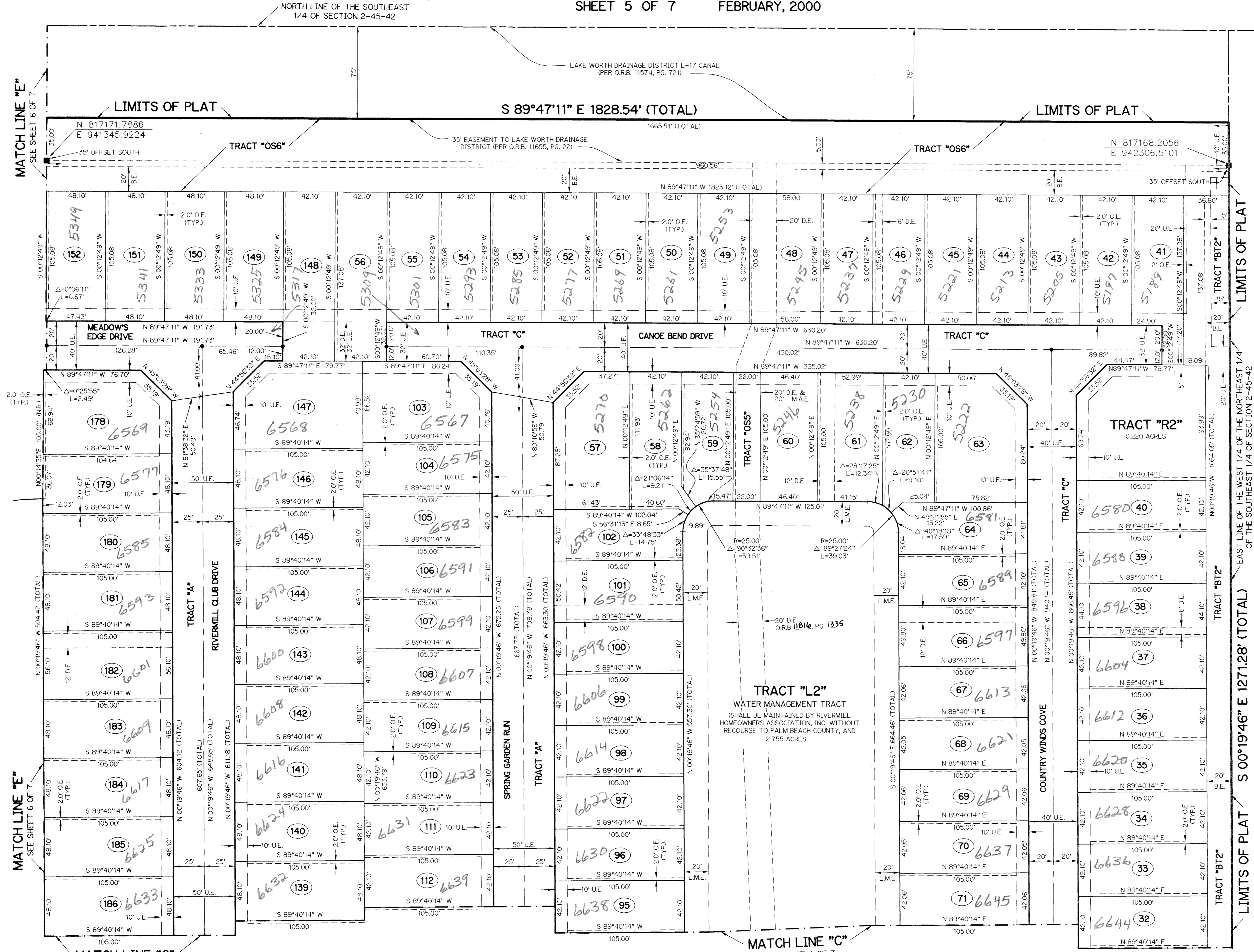
A PARCEL OF LAND LYING IN  
 SECTION 2, TOWNSHIP 45 SOUTH, RANGE 42 EAST,  
 PALM BEACH COUNTY, FLORIDA.  
 SHEET 5 OF 7 FEBRUARY, 2000

UNPLATTED

UNPLATTED

0951-001

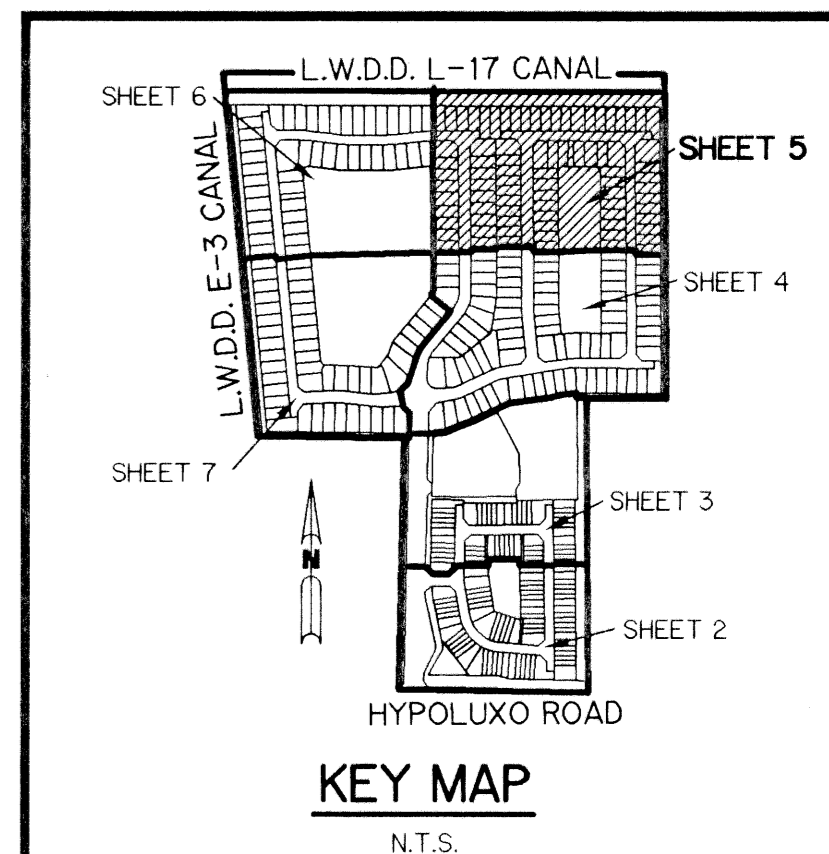
75



**NOTE:**  
 COORDINATES SHOWN ARE GRID COORDINATES  
 DATUM = NAD 83 (1990 ADJUSTMENT)  
 ZONE = FLORIDA EAST ZONE  
 LINEAR UNIT = U.S. SURVEY FEET  
 COORDINATE SYSTEM 1983 STATE PLANE  
 TRANSVERSE MERCATOR PROJECTION  
 ALL DISTANCES ARE GROUND  
 SCALE FACTOR = 1.000034481  
 NO ROTATION: PLAT BEARING = GRID BEARING

- LEGEND:**
- - SET PERMANENT REFERENCE MONUMENT, LB-6674
  - - PERMANENT CONTROL POINT, PSM #4190
  - △ - DELTA ANGLE
  - B.E. - BUFFER EASEMENT
  - C.E. - CENTERLINE
  - C.B. - CHORD BEARING
  - C.H. - CHORD LENGTH
  - D.B. - DEED BOOK
  - D.E. - DRAINAGE EASEMENT
  - L. - ARC LENGTH
  - A.E. - ACCESS EASEMENT
  - L.A.E. - LIMITED ACCESS EASEMENT
  - L.M.A.E. - LAKE MAINTENANCE ACCESS EASEMENT
  - L.M.E. - LAKE MAINTENANCE EASEMENT
  - L.W.D.D. - LAKE WORTH DRAINAGE DISTRICT
  - NR. - NOT RADIAL
  - N.T.S. - NOT TO SCALE
  - O.E. - OVERHANG EASEMENT
  - O.R.B. - OFFICIAL RECORD BOOK
  - P.B. - PLAT BOOK
  - PGS. - PAGES
  - P.S.M. - PROFESSIONAL SURVEYOR AND MAPPER
  - R. - RADIUS
  - R/W. - RIGHT-OF-WAY
  - S.T. - SURVEY TIE
  - U.E. - UTILITY EASEMENT
  - N.T. - NON-TANGENT
  - R.F. - RADIAL TO FRONT LOT LINE
  - RR. - RADIAL TO REAR LOT LINE
  - P.A.E. - PEDESTRIAN ACCESS EASEMENT
- N 814602.8657  
 E 785753.1680 - DENOTES STATE PLANE COORDINATES

THIS INSTRUMENT PREPARED BY  
 WILBUR F. DIVINE, P.S.M. 4190, STATE OF FLORIDA  
 LAWSON, NOBLE AND WEBB, INC., LB-6674  
 ENGINEERS PLANNERS SURVEYORS  
 420 COLUMBIA DRIVE, SUITE 110  
 WEST PALM BEACH, FLORIDA



Rivermill 75  
 88  
 1756  
 34  
 33463  
 NYE